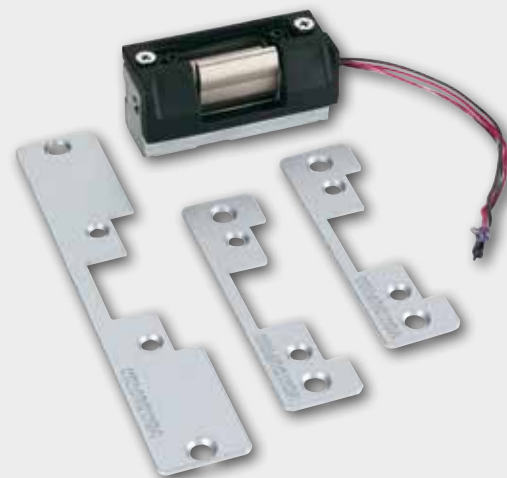


VON DUPRIN®

5100 Series

Electric strikes for
cylindrical locksets



Overview

The Von Duprin 5100 electric strike has been designed and manufactured to meet the needs of locksmiths and security professionals. This easy-to-install electric strike was created for medium-duty applications, specifically to control traffic flow through interior and exterior openings in retail and commercial environments.

The 5100 electric strike is designed for maximum flexibility. It comes standard with three faceplates for hollow metal, wood or aluminum frames in every box. The internal 12/24VDC solenoid provides additional versatility. While the adjustable keeper improves fit for applications with weather stripping or tight door preps. Furthermore, power failure mode is field selectable fail-safe/fail-secure.

With multiple faceplates and flexible options, the 5100 provides added convenience by ensuring the right parts are in the box to get the job done. This reduces labor expense and reduces return trips to the job site.

The 5100 was developed with Von Duprin's high standards and engineering expertise. Its heavy-duty construction and tamper-resistant design is able to withstand abuse. The 5100 is tested to over one million cycles and provides 1300 lbs holding strength.

Features and benefits

- Three faceplates standard in every box
- 12/24 dual-voltage
- Field selectable fail-safe/fail-secure
- Adjustable keeper
- Internal solenoid
- Keeper depth of 1/2"
- Illustrated installation instructions
- Tamper resistant
- One year electrical product warranty
- Heavy-duty construction
- Meets BHMA A156.31, Grade 1 for endurance and dynamic strength, and Grade 2 for static strength
- Static strength 1300 lbs
- Dynamic strength 70 ft-lbs
- Endurance 1,000,000 cycles

Technical specifications

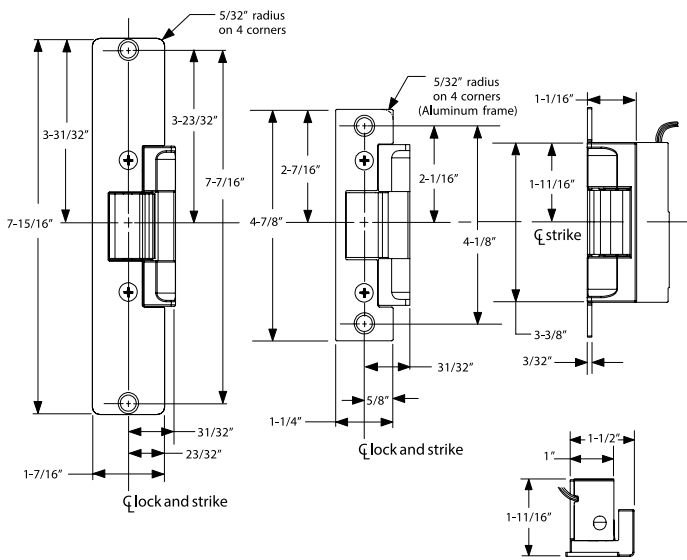
Power options

DC: Regulated power supplies (recommended)	PS902 power supply	
AD/DC: Conversion	Von Duprin SO-24 kit	
	12VDC	24VDC
Resistance (ohms)	32	128
Power (watts)	4.5	4.5
Current (amps)	0.38	0.19
Continuous duty operation	All specs $\pm 10\%$ @ 77°F/25°C	

Model specifications

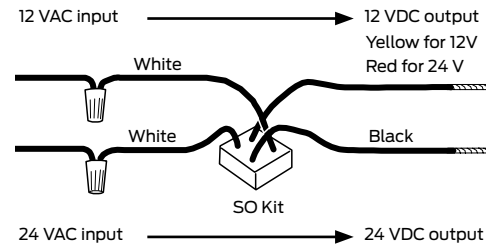
Model #	5100
Latchbolt throw	1/2" to 5/8" with 1/8" door-frame gap
Face plate length	4 7/16" or 7 15/16"
Backbox depth	1 11/16"
Lockset	Cylindrical
Door/frame type	Hollow metal, aluminum and wood
Number of doors	Single
Certifications	ANSI/BHMA 156.5 Grade 1, UL 1034 burglary listing
Application notes	Versatile electric strike for aftermarket, covering multiple applications in one SKU.

Lockset compatibility: Keeper depth of 1/2" is sufficient to accommodate all cylindrical locks up to 5/8" throw and most aluminum narrow stile deadlatches.

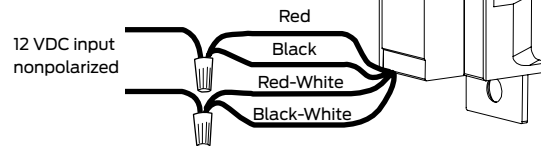


Solenoid power requirements; 12VDC, 0.38 A, 24 VDC, 0.19 A

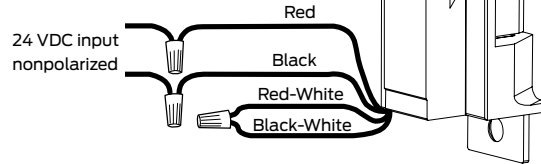
For DC operation, Von Duprin PS902 series power supply is recommended. For AC operation, Von Duprin SO24 kit is recommended.



12 VDC strike wiring



24VDC strike wiring



Ordering information

5100-689-S024

Model	Finish	Rectifier kit*
1	2	3

* Optional

Selections correspond with the numbers above

1	Model
5100	Electric strike for cylindrical locksets
2	Finish
689	Aluminum
622	Black
695	Dark brown
3	Rectifier kit (optional)
S012	Converts 12 VAC voltage to 12 VDC to operate the solenoid
S024	Converts 24 VAC voltage to 24 VDC to operate the solenoid

Standard features

- 24 volts DC
- Fail-secure
- Field convertible to fail-safe
- Mounting tabs
- Retrofit kit

About Allegion

Allegion (NYSE: ALLE) creates peace of mind by pioneering safety and security. As a \$2 billion provider of security solutions for homes and businesses, Allegion employs more than 8,000 people and sells products in more than 120 countries across the world. Allegion comprises 27 global brands, including strategic brands CISA®, Interflex®, LCN®, Schlage® and Von Duprin®. For more, visit www.allegion.com.

aptiQ ■ LCN ■ SCHLAGE ■ STEELCRAFT ■ VON DUPRIN



© 2013 Allegion
005009, Rev. 02/15
allegion.com