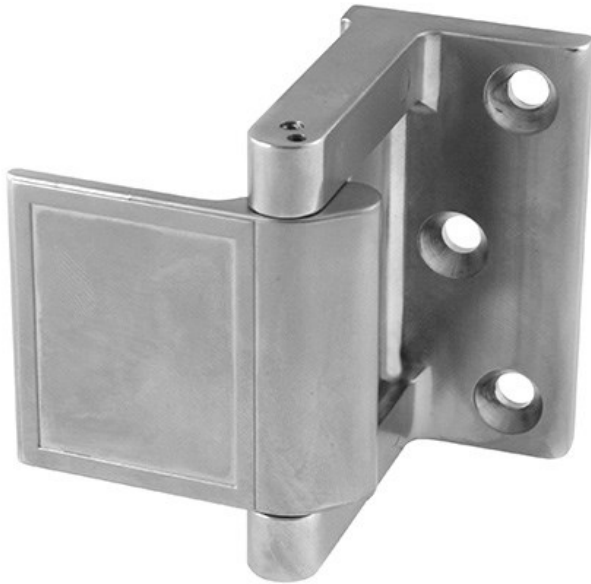


The global leader in
door opening solutions

Rockwood PDL - Privacy Door Latch (formerly 607)



Available Finishes:

- BRS
- DBRS
- STNN
- CRM
- DCRM
- ORB

SIZE:

1 1/2" x 2 13/16"

WEIGHT:

0.75 lbs.

Specifications:

MATERIAL:

Zinc Die Cast

FASTENERS:

#12 x 1 1/4" Flat Head Sheet Metal Screws



FEATURES:

- ADA compliant
- Enhanced in room privacy
- Easy to install
- For use with UL Classified fire doors for use with hollow metal steel composite type fire doors rated up to and including 3 hrs. Wood composite type fire doors rated up to and including 1 1/2 hrs and 20 minutes without hose stream.

300 Main Street
Rockwood, Pennsylvania 15557
P: 800.458.2424 • F: 800.922.9212
www.rockwoodmfg.com • orders.rockwood@assaabloy.com

Copyright © 2017, Rockwood Manufacturing Company, an ASSA ABLOY Group company. All rights reserved. Reproduction in whole or in part without the express written permission of Rockwood Manufacturing Company is prohibited.