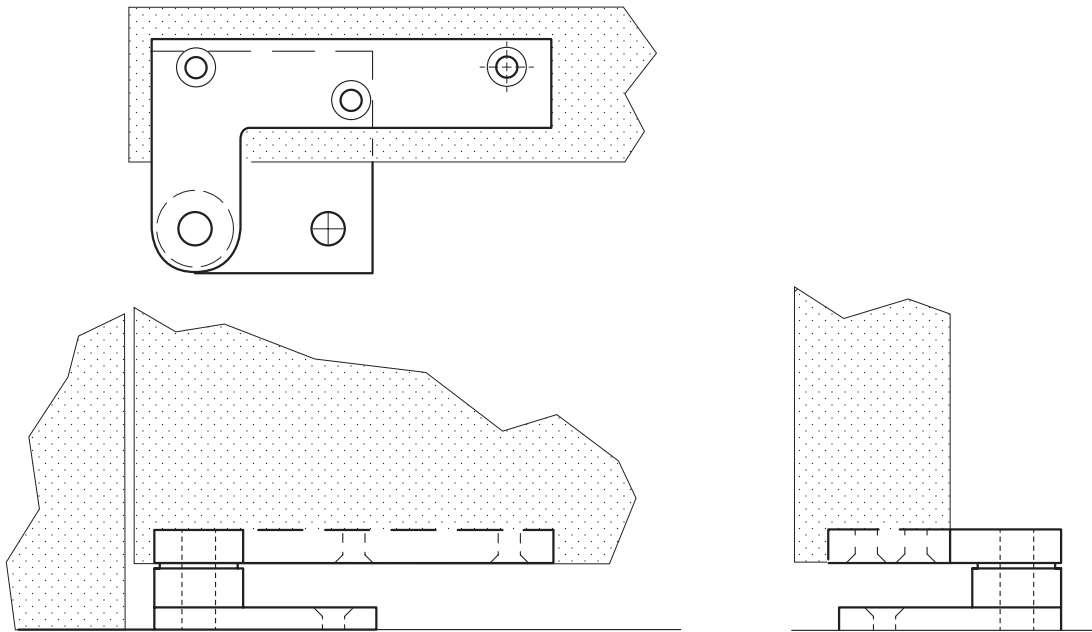


The global leader in
door opening solutions

Rockwood CP40 - Standard Floor Pivot Standard Duty $\frac{3}{8}$ " Thick



Available Finishes:

- US3/605
- US4/606
- US10/612
- US10B/613
- US10BE/613E
- US26/625
- US26D/626

WEIGHT:
1.3 lbs.

MATERIAL SIZE:
 $\frac{3}{8}$ " thick for doors
up to 200 lbs.

Specifications:

MATERIAL:
Solid Brass

FASTENERS:
6 ea. #12 x 1 $\frac{1}{4}$ " Flat Head Wood Screws

- FEATURES:**
- Mostly invisible when installed
 - Includes Teflon® bearing for smooth silent operation (Teflon® is a registered trademark of E.I. DuPont de Nemours and Company or its affiliates)
 - Field changeable handing
 - Standard Duty is made from $\frac{3}{8}$ " thick brass

ORDERING:
Specify door thickness and floor clearing

300 Main Street
Rockwood, Pennsylvania 15557
P: 800.458.2424 • F: 800.922.9212
www.rockwoodmfg.com • orders.rockwood@assaabloy.com

Copyright © 2017, Rockwood Manufacturing Company, an ASSA ABLOY Group company. All rights reserved. Reproduction in whole or in part without the express written permission of Rockwood Manufacturing Company is prohibited.