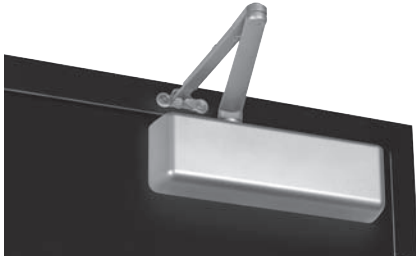


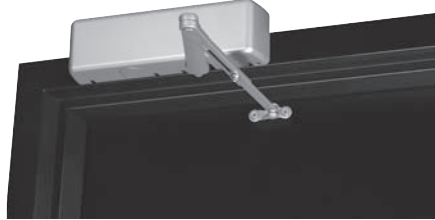
### APPLICATIONS

#### Standard Arms



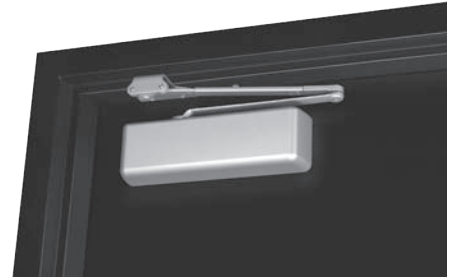
TPN arm shown (regular mounting)

- » Pull-side application
- » Closer mounted on the door



TPN arm shown (top jamb mounting)

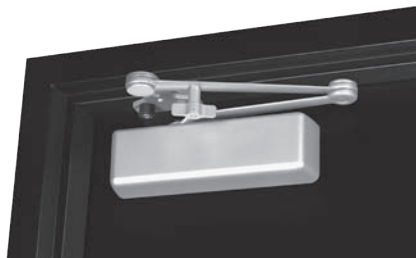
- » Push-side application
- » Closer mounted on the frame
- » Minimum top rail = 2-1/4" (57mm)
- » Maximum frame reveal = 2-3/4" (70mm)



TPN arm shown (parallel mounting)

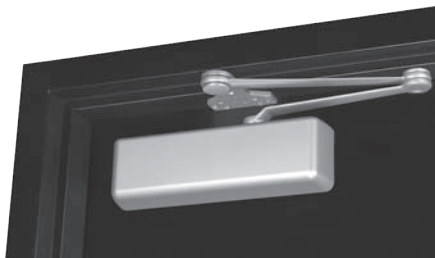
- » Push-side application
- » Closer mounted on the door

#### Heavy Duty Arms



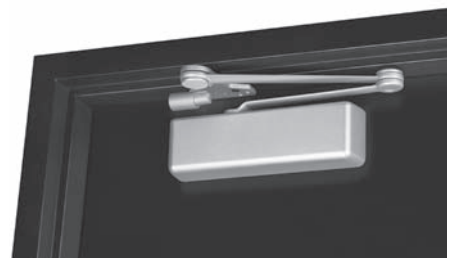
HDH arm (with stop) shown

- » Push-side application
- » Heavy-duty arm
- » Stop is removable



HDN arm (without stop) shown

- » Push-side application
- » Heavy-duty arm
- » Stop is removable



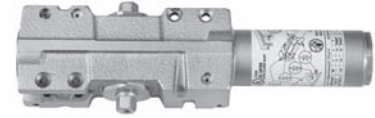
CPS arm shown

- » Push-side application
- » Heavy-duty arm
- » Buffer spring provides greater protection at the end of door opening cycle
- » Spring is removable

NOTE: Arms are not interchangeable with Norton's premium line of closers.

**MODEL/PART NUMBERS**

Model #	Description
410xTPN	Non-Hold Open, Tri-Packed
410DAxTPN	Non-Hold Open, Delayed Action, Tri-Packed
410xTPH	Hold Open, Tri-Packed
410xHDN	Heavy-Duty, Non-Hold Open with Removable Stop
410xHDH	Heavy-Duty, Hold Open with Removable Stop
410xCPS	Heavy-Duty, Non-Hold Open with Removable Stop and Spring Buffer
410xCPST	Heavy-Duty, Hold Open with Removable Stop and Spring Buffer



**MISCELLANEOUS PARTS\***

Part Number	Description
410COV	Cover
SP410	Screw Pack
2730KIT	CPS Kit

\*Specify finish when ordering



CPS Kit

**COVER DIMENSIONS**

Cover Dimensions		
Width	Length	Projection
3-1/2" (89mm)	12-1/4" (311mm)	2-1/4" (57mm)



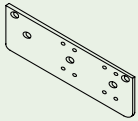
### OPTIONAL FASTENERS

Part Number	Description
SN-134	Sex Nuts
TBGN134-47	Through-Bolts & Grommet Nuts

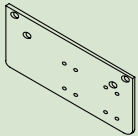
Note: Sex nuts furnished standard with all models.

### ACCESSORIES

#### Closer Mounting Plates



**410RDP** Narrow Frame Drop Plate (regular arm): Required for hinge side mount where top rail is less than 3-3/4" (95mm). Plate requires 2" (51mm) minimum top rail.



**410PDP** Narrow Top Rail Drop Plate (parallel arm): Required for parallel arm mounting where top rail is less than 5-1/2" (140mm), measured from the stop. Plate requires 2" (51mm) minimum top rail.