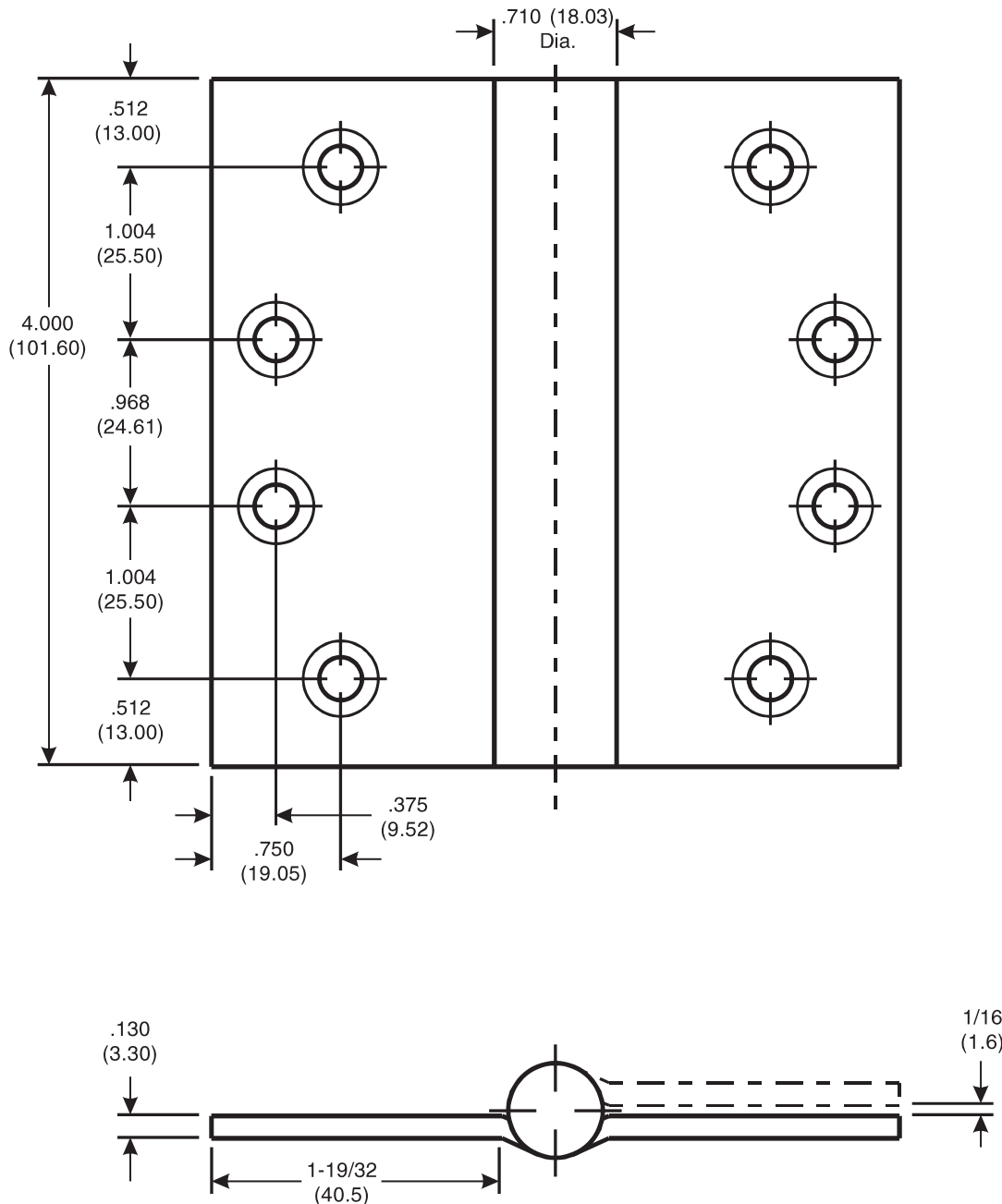


Architectural Door Accessories

McKinney 4" - 1502 Template Full Mortise Concealed Bearing Adjustable Spring Hinge

The global leader in
door opening solutions

DO NOT SCALE
DIMENSIONS: INCHES (MM)



Template 535-98

Effective date:
March 30, 1998

Supersedes: All Previous

McKINNEY Template Full Mortise Concealed Bearing Adjustable Spring Hinges are made to conform to ANSI/BHMA 156.7.

Machine Screw Size:
1/2 x 12-24 F.H.

Wood Screw Size:
1 1/2 x 12 F.H.

225 Episcopal Road
Berlin CT 060377
P: 800.346.7707 | F: 800.541.1073
www.mckinneyhinge.com | dss-orders@assaabloy.com

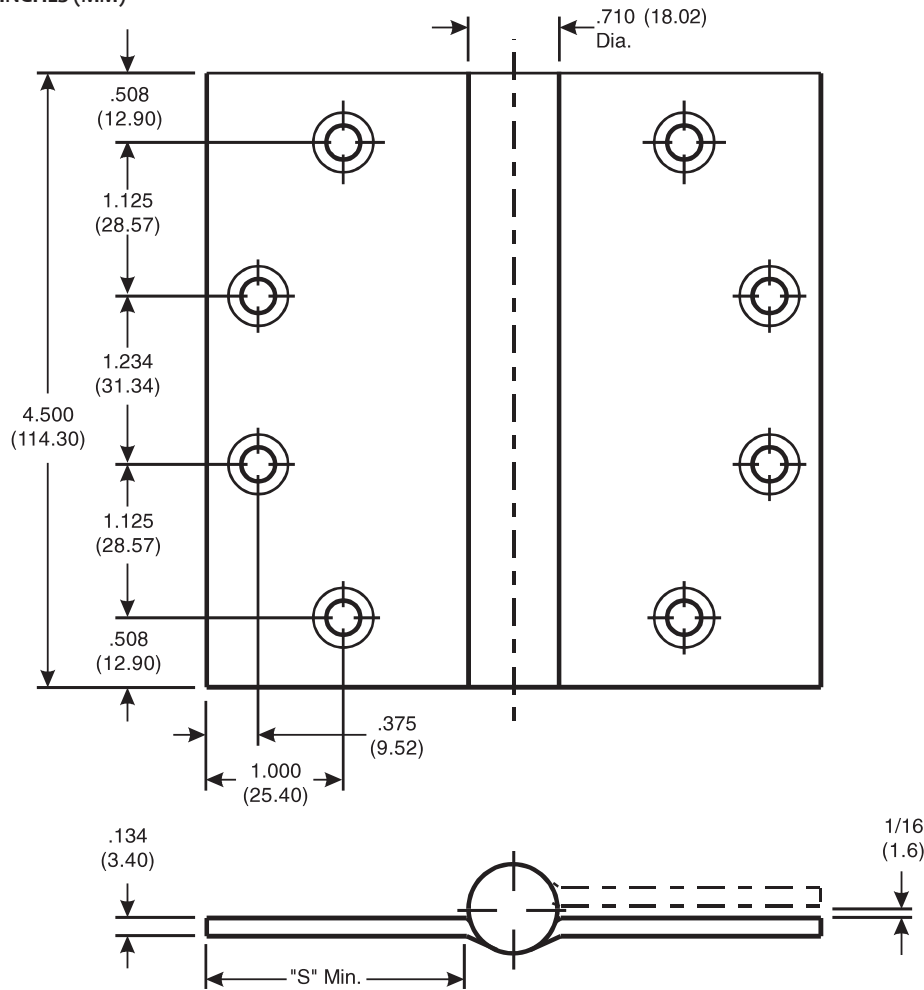
McKinney is a brand associated with Corbin Russwin, Inc., an ASSA ABLOY Group company. Copyright © 2017, Corbin Russwin, Inc. All rights reserved. Reproduction in whole or in part without the express written permission of Corbin Russwin, Inc. is prohibited.

Architectural Door Accessories

McKinney 4½ x 4, 4½ x 4½ 1502 Template Full Mortise Concealed Bearing Adjustable Spring Hinge

The global leader in
door opening solutions

DO NOT SCALE
DIMENSIONS: INCHES (MM)



Template 540-98

Effective date:
March 30, 1998

Supersedes: All Previous

McKINNEY Template Full
Mortise Concealed Bearing
Adjustable Spring Hinges
are made to conform to
ANSI/BHMA 156.7.

Machine Screw Size:
½ x 12-24 F.H.

Wood Screw Size:
1¼ x 12 F.H.

CATALOG NUMBER		"S" DISTANCE (SWAGE LINE)	
STEEL HINGES	STAINLESS STEEL HINGES	HINGE WIDTH	
		4 (101.6)	4½ (114.3)
1502	1552	1-19/32 (40.48)	1-27/32 (46.8)
1522 Set	-	1-19/32 (40.48)	1-27/32 (46.8)

225 Episcopal Road
Berlin CT 060377
P: 800.346.7707 | F: 800.541.1073
www.mckinneyhinge.com | dss-orders@assaabloy.com

McKinney is a brand associated with Corbin Russwin, Inc., an ASSA ABLOY Group company. Copyright © 2017, Corbin Russwin, Inc. All rights reserved. Reproduction in whole or in part without the express written permission of Corbin Russwin, Inc. is prohibited.