

A
Hinges & pivots

B60
Pulls & plates

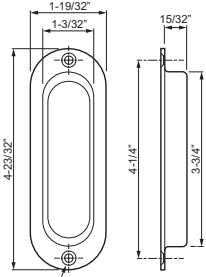
C
Flush bolts & coordinators

D
Latches, catches & bolts

E
Stops

F
Exterior hardware

G
Miscellaneous hardware



919 Decorative flush pull - oval

- Contoured for ease of pulling.
- Packaged with fasteners for wood applications. Surface #6 X 3/4" OH PH

Certifications

- Meets ANSI/BHMA 156.9 and A156.14

Material substrate

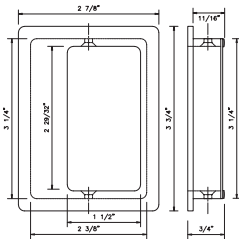
- Made from brass.

Finishes

BHMA	Description	Substrate	Finish
605	Bright brass	Brass	605
613	Oil rubbed bronze	Brass	613
619	Satin nickel	Brass	619
622	Matte black	Brass	B-BLK
625	Bright chrome	Brass	625
626	Satin chrome	Brass	626
—	Aged bronze	Brass	B-643e/716

Dimensions

- 4-23/32" high x 1-19/32" wide x 15/32" deep



950 Decorative flush pull - rectangle

- Features a finger pocket for ease of pulling.
- Packaged with fasteners for wood applications. Concealed #6 X 3/4" OH PH

Certifications

- Meets ANSI/BHMA A156.9 and A156.14

Material substrate

- Made from brass.

Finishes

BHMA	Description	Substrate	Finish
605	Bright brass	Brass	605
613	Oil rubbed bronze	Brass	613
619	Satin nickel	Brass	619
622	Matte black	Brass	B-BLK
625	Bright chrome	Brass	625
626	Satin chrome	Brass	626
—	Aged bronze	Brass	B-643e/716

Dimensions

- 3-3/4" high x 2-7/8" wide x 11/16" deep