

The Chexit®



Designed for use on delayed exit applications, the Chexit system is ideal for controlled areas.

All controls, auxiliary locking, local alarm, and remote signalling are self-contained in the Chexit, providing safe, secure, easy to install and simple to operate door control and exit hardware.

Chexit controlled exit device for use on Panic or Fire Exit hardware applications.

This concept in delayed exit systems combines life safety with the needs of security and meets all requirements of NFPA 101 for "Special Locking Arrangement."

The Chexit device includes decal for application on door.

"PUSH UNTIL ALARM SOUNDS.

DOOR CAN BE OPENED IN 15 SECONDS"

Solenoid Specifications:

- Continuous Duty – 24VDC
- Current Inrush – 16 amperes
- Current Holding – .3 amperes

Requires PS873 Power Supply

Request to Exit Switch:

Built into the device to detect when someone attempts to exit. Pushing the push pad when the device is armed will cause this switch to start an irreversible alarm cycle.

Nuisance Alarm:

When a Chexit is located in a public area, it can be desirable to limit false alarms. If the Nuisance Delay options are set to off, the device will go into alarm as soon as the push pad is touched (when armed). Turning the Nuisance Delay on will require the push pad to be pressed for 2 seconds before the Chexit goes into alarm. If the Nuisance Audible and Nuisance Delay are both on, the alarm will sound as soon as the push pad is pressed, but the alarm sequence will stop unless the push pad is held for 2 seconds or more.

Remote Alarm:

A set of relay contact are provided to give external alarm indication. These contact close when the device is in an irreversible alarm condition. These contact can be used to drive a horn, lamp, or other indicative device.

Key Switch:

The Key Switch provides the means to arm, disarm or reset the Chexit. The key can be removed in either the Arm or Disarm position.

Indicator Lamp:

The status of the Chexit can be determined by the indicator lamp. When the lamp is off, this indicates the device is disarmed and is functioning as a normal exit device (no delay). A continuously on lamp indicates the device has just been armed and as soon as the selectable rearm timer expires, the device will arm. A slow flashing lamp indicates the device is armed. A fast flashing indicator lamp indicates the device is in alarm.

Internal Horn:

Whenever the device is in alarm or the push pad is pressed the internal horn will sound. The volume level of this horn exceeds 85 db at 6 feet.

Door Position Input:

An external door position switch can be connected to the Chexit.

External Inhibit Input:

This optional input is provided to allow remote override of the Chexit in the armed condition. It also allows remote reset of the Chexit in an alarmed condition.

Fire Alarm Input:

This input disables the Chexit immediately upon a fire alarm.

Internal Auxiliary Lock:

The Auxiliary Lock is engaged when the Chexit is armed. The locking mechanism is specifically designed to hold securely even when the exit device is struck with forceful blows.

User Defineable Rearm Time:

The Rearm time is the amount of time after the device is activated before it arms. It is designed to give someone time to pass through the door before rearming occurs. Timing can be changed by the user for any time between 2 and 28 seconds in two second increments. There is also an infinite rearm setting that requires the use of an external door position switch. In this setting the door remains in the rearm mode until the door is closed. This can be useful on jet way doors in an airport.

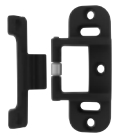
Factory Defineable Delay Time:

Most jurisdictions allow 15 seconds of delay before allowing egress. In those cases where 15 seconds is not appropriate, Von Duprin can set the Chexit for any delay time between 0 and 60 seconds on 2 second increments. For delays greater than 15 seconds a letter from the local authority is required.

VON DUPRIN® 98-F/99-F Rim Fire Exit Device



299F Strike



499F Strike
With 9854/9954
Mullion

98-F and 99-F rim fire exit devices for all types of single doors up to 4' x 10' (1219mm x 3048mm) or 8' x 10' (2438mm x 3048mm) double doors with 9954 or 9854 mullion, UL listed for Fire Exit Hardware. See page 41 for detailed information on UL listed fire exit hardware label and door opening size information. Devices are ANSI A156.3 – 2001 Grade 1. The 98-F device has a smooth mechanism case and the 99-F device has a grooved case. The rim device is non-handed except when the following device options are used: -2 (Double Cylinder) or SS (Signal Switch). See Opposite page for available outside trim and device functions.

The 98-F/99-F devices are available in the following finishes: US3, US4, US10, US26, US26D, US28, 313AN, 315AN and US32D for the 98-F device only. See page 52 for component finishes and the inside cover for finish chips.

Specifications

Device Functions	Device ships EO/DT/NL. Field selectable. For TP,K,or L remove NL drive screw from device		
Device Lengths	3'	2'4" to 3'	(711mm to 914 mm) Door Size
	4'	2'10" to 4'	(864 mm to 1219 mm) Door Size
Strikes	299F – Dull Black, 499F with Mullions Optional Strikes – see page 39		
Dogging Feature	No Mechanical Dogging, EL option available		
Electric Options	LX	Latchbolt Monitor Switch	see page 42
	RX	Pushpad Monitor Switch	see page 42
	RX2	Double Pushpad Monitor Switch	see page 42
	E	Electric Locking & Unlocking	see page 44
	EL	Electric Latch Retraction	see page 43
	SS	Signal Switch	see page 43
	CX	Chexit Delayed Exit	see page 45
	ALK	Alarm Exit Kit	see page 42
Miscellaneous Options	PN	Pneumatic Latch Retraction	see page 48
	-2	Double Cylinder	see page 48
	GBK	Glass Bead Kit	see page 49
Fasteners & Sex Bolts (SNB)	Includes 1 ¾" (19mm) – 2 ¼" (57mm) Wood & Metal Doors Optional SNB available for device, see next page for quantities Optional SLM Blocking Pkg for wood doors with SLM blocking SNB required for wood doors, unless SLM Blocking Pkg specified		
Latch Bolt	Deadlocking, ¾" (19mm) throw		
Device Centerline from Finished Floor	39 13/16" (1011 mm) 39 11/16" (1008 mm) with Mullion		
Center Case Dimensions	8" x 2 ¾" x 2 ¾" (203mm x 70mm x 60mm)		
Mechanism Case Dimensions	2 ¼" x 2 ¼" (57mm x 57mm)		
Projection	Pushbar Neutral – 3 13/16" (97 mm) Pushbar Depressed – 3 1/16" (78 mm)		

See page 53 for How to Order specification

VON DUPRIN® 98-F/99-F Fire Exit Rim Device Standard Trim

	Exit only	Dummy Trim Pull when Dogged (Not recommended for Fire Device)	Night Latch Key Retracts Latchbolt	Night Latch Key Retracts Latchbolt Optional Pull Required
Product Description	98EO-F 99EO-F	-- --	98NL-F 99NL-F	98NL-OP-F 99NL-OP-F
Trim Description	--	990DT	990NL-R/V	110NL-MD 110NL-WD
Escutcheon Plate Size	--	3" x 14 ⁹ / ₁₆ " x ³ / ₃₂ " (76x360x2mm)	3" x 14 ⁹ / ₁₆ " x ³ / ₃₂ " (76x360x2mm)	--
Pull Center to Center	--	5 ¹ / ₂ " (140mm)	5 ¹ / ₂ " (140mm)	--
Projection	--	2" (51mm)	2" (51mm)	--
ANSI Function	01	02	03	03
Cylinder Type	--	--	Rim	Rim
Optional Trim (See pages 32 – 34)	x990EO x992EO x994EO x996EO	x991K-DT x992L-DT x994L-DT x996L-DT x696DT x697DT	x991K-NL x992L-NL x994L-NL x996L-NL x696NL x697NL	
#425 SNB optional-HMD Req. WD w/o SLM Pkg.	6	2	2	6
#825 SNB Req. WD w/o SLM Pkg.	2	2	2	2
#425 SNB Req. w/ 499F	2	2	2	2

	Lever Key Locks & Unlocks	Lever – Night Latch Key Retracts Latchbolt	Lever – Blank Escutcheon Always operable (No Cylinder)	Lever Dummy Trim Pull when Dogged (Not recommended for Fire Device)
Product Description	98L-F 99L-F	98L-NL-F 99L-NL-F	98L-BE-F 99L-BE-F	-- --
Trim Description	996L-R/V	996L-NL-R/V	996L-BE-R/V	996L-DT-R/V
Escutcheon Plate Size	2 ³ / ₄ " x 10 ³ / ₄ " x ²⁷ / ₃₂ " (70x273x21mm)	2 ³ / ₄ " x 10 ³ / ₄ " x ²⁷ / ₃₂ " (70x273x21mm)	2 ³ / ₄ " x 10 ³ / ₄ " x ²⁷ / ₃₂ " (70x273x21mm)	2 ³ / ₄ " x 10 ³ / ₄ " x ²⁷ / ₃₂ " (70x273x21mm)
Pull Center to Center	--	--	--	--
Projection	2 ⁷ / ₈ " (73mm)	2 ⁷ / ₈ " (73mm)	2 ⁷ / ₈ " (73mm)	2 ⁷ / ₈ " (73mm)
ANSI Function	08	09	--	02
Cylinder Type	Rim	Rim	--	--
Optional Trim (See pages 32 – 34)	x992L x994L	x992L-NL x994L-NL	x992L-BE x994L-BE	x992L-DT x994L-DT
#425 SNB optional-HMD Req. WD w/o SLM Pkg.	2	2	2	2
#825 SNB Req. WD w/o SLM Pkg.	2	2	2	2
#425 SNB Req. w/ 499F	2	2	2	2

For optional trims and functions see pages 32-34