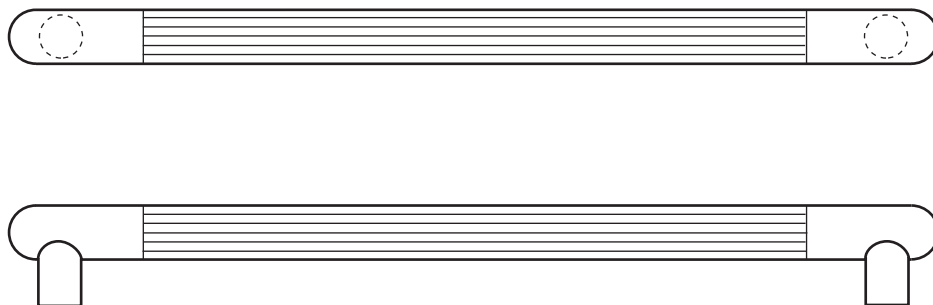


The global leader in
door opening solutions

Rockwood RM3526 - LineaMet - Push Bar - Round Ends



Available Finishes:

- US3/605
- US4/606
- US10/612
- US10B/613
- US10BE/613E
- US32/629
- US32D/630

DIAMETER:
1 1/2"

CTC:
up to 36"

PROJECTION:
3 3/4"

Specifications:

MATERIAL:

Brass, Bronze, Stainless Steel