

MR Series

Mortise Locks



MR SERIES MORTISE LOCKS

HEAVY DUTY GRADE 1

"The Revolution"

SUGGESTED ARCHITECTURAL SPECIFICATIONS

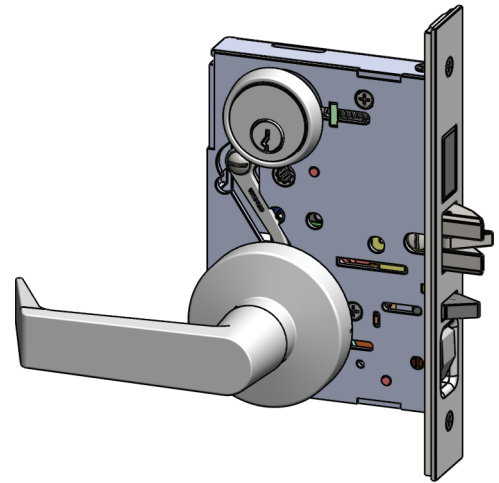
Lockset will be MR Series manufactured by PDQ Industries, Inc., Leola, Pennsylvania, *Complies with Buy American Act* with *Limited Lifetime* warranty. All lock bodies to conform to Federal Specification FF-H-106 Type 86 and to all dimensional specifications of ANSI A156.13-2005 Series 1000, Grade 1. Windstorm Resistant Product Listed-ANSI A250.13-2005, ASTM E1886-02, ASTM E330-02, Outswing: 350 ft-lbs., N/R, Design Load Rating: 2453 lbf. (functions with deadbolts only). Thirty nine mortise lock functions shall be available. Some handing shall be reversible in the field. Latchbolt can be fully retracted with 35° lever rotation. Lever shall return to within 1/2" of door (except Miami and Memphis). Levers will have a Miami, Dallas, Philadelphia, Boston, Chicago or Memphis design.

A stainless steel ball knob is available. Dallas W trim is furnished in solid stainless steel, Dallas and Chicago J trim are tube levers. Locksets for single doors up to 4'0" x 8'0" shall be listed by UL / ULC for ratings of "A" (3 hours) label and less. All locksets shall have a *Limited Lifetime* warranty from date of installation. All lever locksets shall meet or exceed all applicable requirements of the Americans with Disabilities Act of 1990.



SPECIFICATIONS – MR Series

DOOR THICKNESS:	1-3/4" to 2" standard (2-1/4" special order - not available in all functions or in "J" trim)
CASE:	13-gauge cold rolled steel mechanism / Dichromated for corrosion resistance
BACKSET:	2-3/4"
FRONT:	Beveled 1/8" on 2" / Stainless Steel or Brass (brass in F trim only)
STRIKE:	Handed Curved Lip Strike / Stainless Steel or (brass in F trim only)
LATCHBOLT:	3/4" Throw / Investment Cast Stainless Steel / Anti-friction
DEADBOLT:	1" Throw / Investment Cast Stainless Steel
HAND:	Most functions field reversible. Designate hand for strikes, consult factory for details
TRIM:	F trim - solid forged brass levers, escutcheons and turns. J trim - solid stainless steel escutcheon, PHL and Memphis levers. Stainless steel Dallas and Chicago levers. W trim - solid stainless steel lever and escutcheon. Stainless steel ball knob.
KEYS:	Two (2) per Cylinder
KEYWAYS:	SC1 standard / Also available in keyways of other manufacturers
INTERCHANGEABLE CORE:	6 or 7-pin / Compatible with Best, Falcon & Arrow / Large Format IC Core available. Check with factory.
CYLINDER:	6 or 7-pin Brass Mortise Cylinder
KEYING:	Options: MK, CMK or GMK / Zero Bitted (KO), Keyed Different (KD) or Keyed Alike (KA) Can be keyed into existing master key systems
FINISHES:	605 (US3), 606 (US4), 612 (US10), 613 (US10B), 625 (US26), 626 (US26D) - F trim / Antimicrobial Coating available on 626 (US26D) & 630 (US32D) for F, J, and W trims.
CERTIFICATION:	U.L., U.L.C. listed for "A" label (3 hour) single swing doors (4' x 8') / UL 10C / UBC 7-2 (1997) positive pressure, for single doors up to 4'0" x 8'0" / Certified to ANSI/BHMA 156.13-2005, Series 1000, / Operational Grade 1 and Security Grade 1 for F and W trim. Operational Grade 1, Security Grade 2 for J trim. Windstorm Resistant product Listed. ANSI A250.13-2003, ASTM E1886-02, ASTM E330-02, Outswing: 350 ft-lbs., Inswing: N/R, Design Load Rating: 2453 lbf. (Functions with deadbolts only) / Levers meet all applicable accessibility requirements of the Americans with Disabilities Act (ADA)
WARRANTY:	Lifetime Limited Warranty
COUNTRY OF ORIGIN:	Assembled in the U.S.A. with U.S. and foreign material. Meets the requirements of the Buy American Act.



Note: Heavy Duty Spindle for High Abuse situations is available for F and W trim.

INDIVIDUAL LOCK COMPONENTS

Features	Benefits	Features	Benefits
<p>SPINDLES</p> <p>Spindle is designed to shear at excessive force to prevent damage to lock case. A Heavy</p>	<p>Duty Spindle is also available for F and W Trims.</p>	<p>HUBS</p> <p>Hubs directly retract latchbolt for positive latch retractions.</p>	<p>No need to reverse hubs to change handing.</p>
<p>CYLINDERS</p> <p>Alloy cylinder screws lock cylinder into place to resist attack by wrenching.</p>	<p>Easily accessible through back plate of lock case.</p>	<p>CASE/COVER BACKPLATE/ POSTS AND SCREWS</p> <p>11 and 13 gauge steel components are interlocked for strength and alignment. Steel posts and screws prevent spreading of lock body with excessive force.</p>	<p>No need to service this case. Handing and changing of most functions are done without removing case cover.</p>
<p>SECTIONAL AND ESCUTCHEON THROUGH BOLTING</p> <p>Escutcheon posts are forged from parent part. Steel through bolts on sectional trim align trim to case and add strength to the assembly.</p>	<p>Easy installation.</p>	<p>STOPWORKS/LOCKS</p> <p>Stainless steel toggle style stopworks.</p>	<p>Stopworks easily reversible through back plate of lock case.</p>
<p>BOLTS</p> <p>Stainless steel construction withstands substantial loads. When a load is applied to the door, the latch bolt absorbs the load first, allowing the deadbolt free movement.</p>	<p>Latchbolt and deadbolt are cast stainless steel. All bolts are guided by multiple points to ensure alignment during operation.</p>	<p>CAM</p> <p>Corbin A01</p>	

CHOOSE YOUR KEY WAY

PDQ Keyway	Compatible With	Code
ARA	ARROW AR1	KD Keyed Different
CO6	CORBIN 59/60	KA Keyed Alike
RUD	RUSSWIN D-1	KO Zero Bitted
SCC	SCHLAGE C	MK Master Keyed
SCE	SCHLAGE E	GMK Grand Mastered Keyed
SCC-K	SCHLAGE Composite C-K	CK Construction Keyed
SAL	SARGENT LA	
GA	YALE GA	
YA8	YALE Y8	
FALCON	FAL E-R	
TA	PDQ Restricted	
LFIC	Proprietary Keyway UL437 Cylinders	

MORTISE CYLINDERS #16

PDQ Mortise Cylinders are available in the keyways of most manufacturers. When ordered separately, define length (if other than 1-1/8"), keyway, cam, and finish.

SPECIFICATIONS

CYLINDER: Brass 6-pin length standard.
CAM: Standard Corbin AO1 Cloverleaf required for MR lock all functions.
LENGTH: Sectional: 1-1/8" standard.
 Escutcheon: 1-1/4" standard.
CAP: Brass, bronze, or aluminum.
KEYS: Brass. Two change keys per cylinder.
KEYWAYS: Available in keyways of most major manufacturers including interchangeable core.
FINISHES: US3 (605), US4 (606), US10 (612), US10B (613), US26 (625), US26D (626).



SPECIFICATIONS – INTERCHANGEABLE CORE

CYLINDER: Brass 6-pin 1-1/4". 7-pin 1-3/8".
 LFIC and High Security.
CAM: Standard Corbin AO2 Cloverleaf required for MR lock all functions.
KEYS: Brass. Two change keys and one control key per cylinder.
KEYWAYS: A, B, C, D, E, F, G, H, J, L, and three security keyways—
 PDQ-1, PDQ-2, PDQ-3 (restricted),
FINISHES: US3 (605), US4 (606), US10 (612), US10B (613), US26 (625), US26D (626).



Thumb Turn

Thumb turn as shown is furnished with sectional trim. For escutcheon trim, thumb turn is mounted to escutcheon.

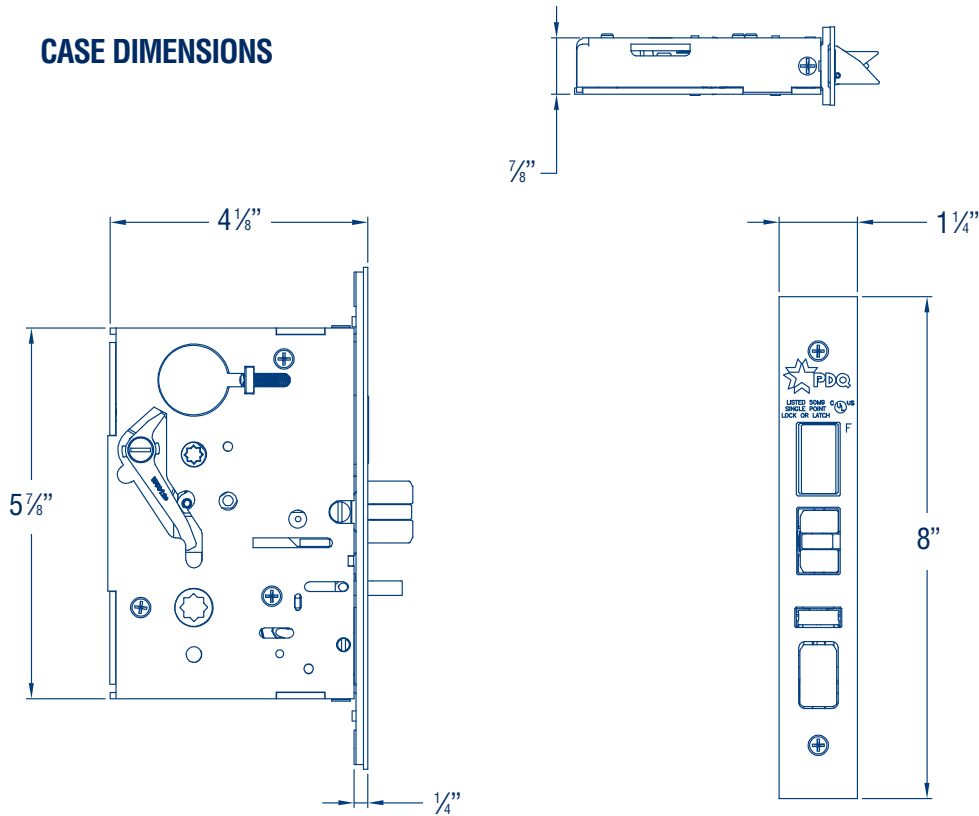
Strikes

MR mortise locks are shipped with ASA/ANSI 4-7/8" strikes. Curved lip strike Handed. Extended lip also available.

To order strikes separately, specify function, finish and hand. Strikes ordered separately are furnished without strike boxes.

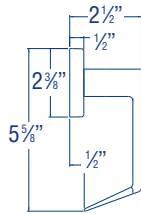
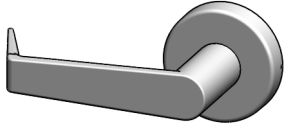


CASE DIMENSIONS

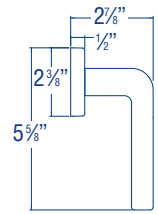
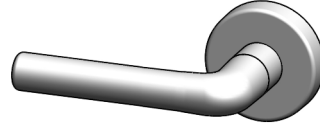


SECTIONAL J TRIM

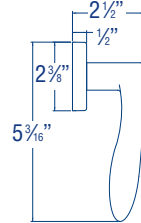
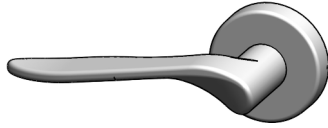
PJSJ – Philadelphia



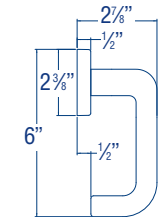
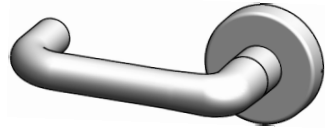
CJSJ – Chicago



TJSJ – Memphis

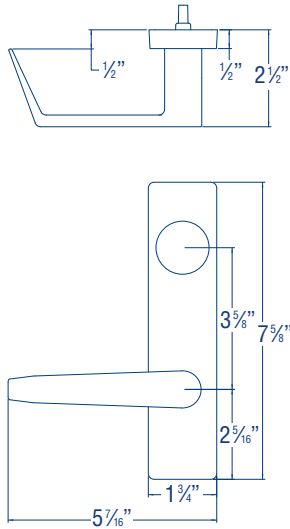
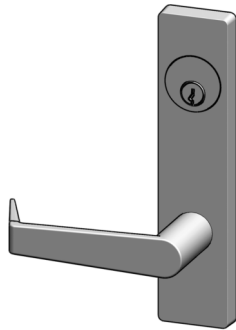


DJSJ – Dallas

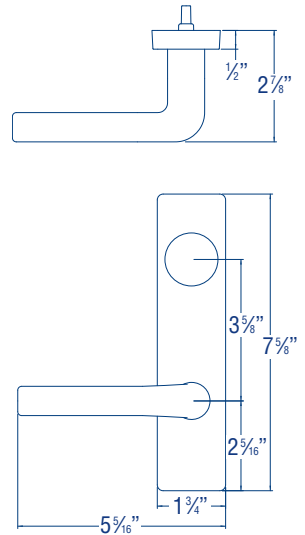
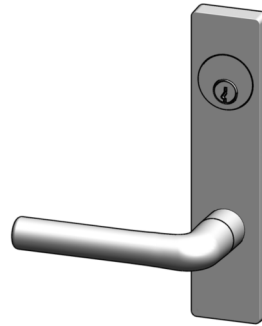


ESCUTCHEON J TRIM

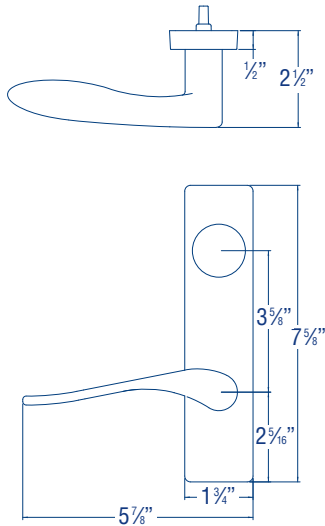
PJEJ – Philadelphia



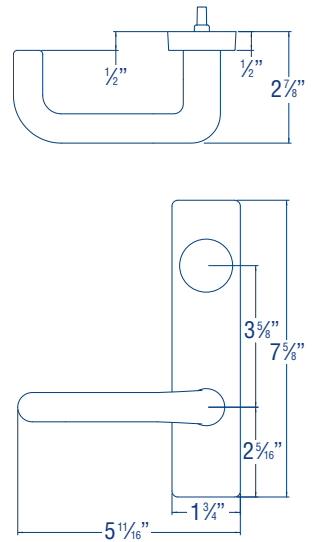
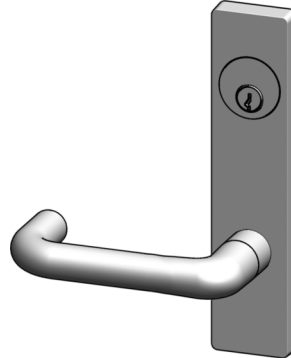
CJEJ – Chicago



TJEJ – Memphis

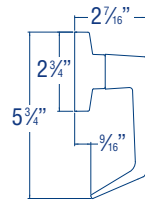
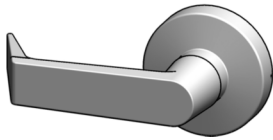


DJEJ – Dallas

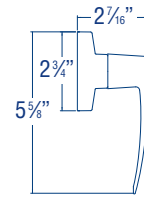
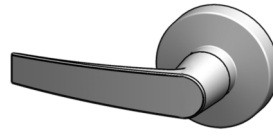


SECTIONAL F TRIM

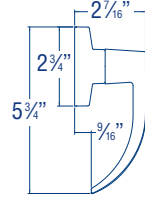
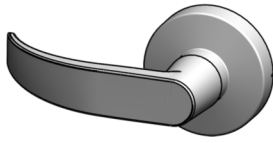
PFSF – Philadelphia



MFSF – Miami

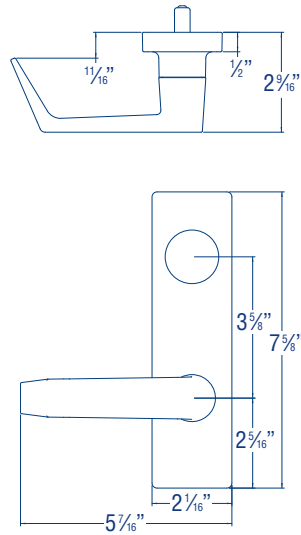


BFSF – Boston

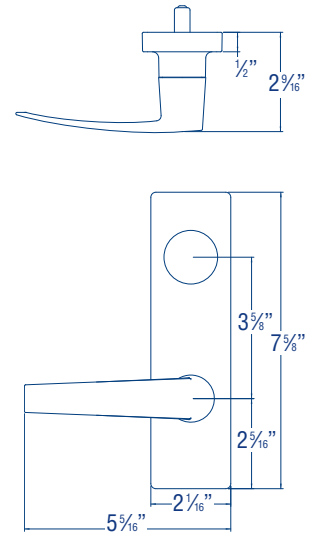


ESCUTCHEON F TRIM

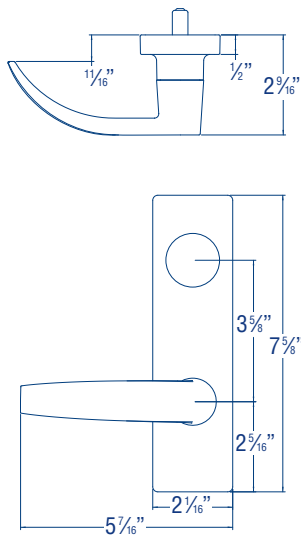
PFEF – Philadelphia



MFEF – Miami

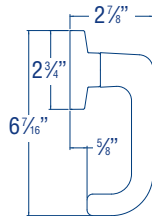
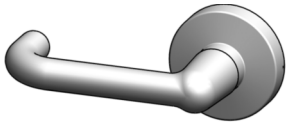


BFEF – Boston

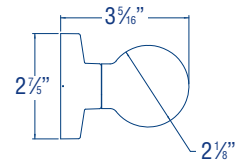
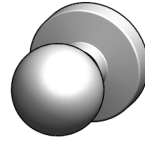


SECTIONAL W TRIM

DWSW – Dallas

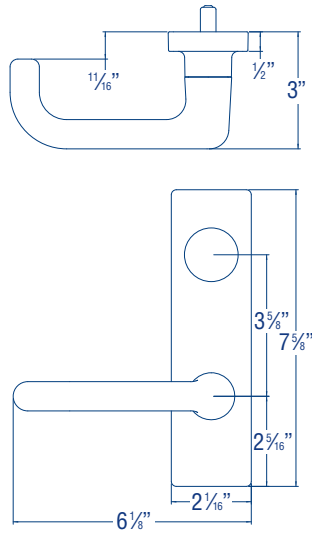
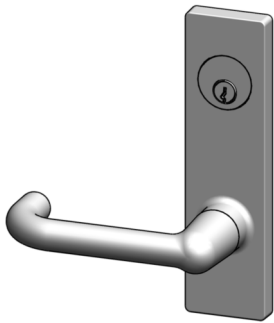


BWSW – Ball Knob

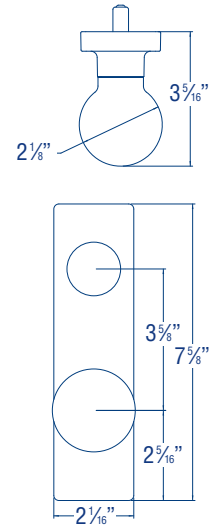
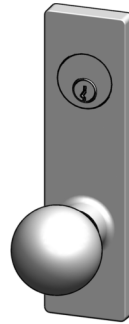


ESCUTCHEON W TRIM

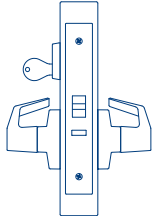
DWEW – Dallas



BWEW – Ball Knob



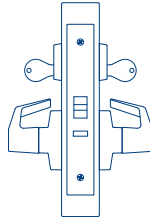
MR113 HOLD BACK- SINGLE CYLINDER



- Latchbolt operated by lever from inside
- Key outside retracts latchbolt
- Rigid outside lever
- Auxiliary latch deadlocks latchbolt
- Key outside secures latchbolt when latchbolt is retracted by inside lever

ANSI F06

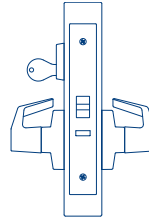
MR114 HOLD BACK- DOUBLE CYLINDER



- Latchbolt operated by lever from inside
- Key outside retracts latchbolt
- Rigid outside lever
- Auxiliary latch deadlocks latchbolt
- Key inside secures latchbolt when latchbolt is retracted by inside lever

ANSI DOES NOT LIST THIS FUNCTION

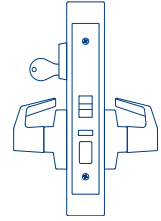
MR115 STOREROOM



- Latchbolt operated by lever from inside
- Key outside retracts latchbolt
- Rigid outside lever
- Auxiliary latch deadlocks latchbolt

ANSI F07

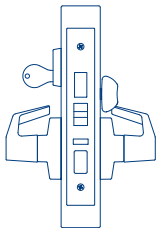
MR116 OFFICE



- Latchbolt operated by lever from either side
- Toggle locks/unlocks outside lever
- Key outside retracts latchbolt
- Auxiliary latch deadlocks latchbolt

ANSI F04

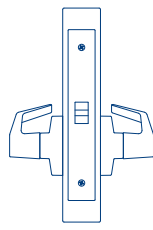
MR117 FRONT DOOR



- Latchbolt operated by lever from either side
- Toggle locks/unlocks outside lever
- Key outside retracts latchbolt
- Key outside extends/retracts deadbolt
- Thumbturn inside extends/retracts deadbolt

ANSI F08 or F10

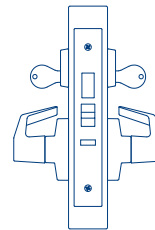
MR126 PASSAGE



- Latchbolt operated by lever from either side

ANSI F01

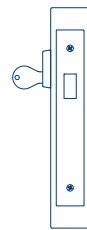
MR128 INSTITUTION WITH DEADBOLT



- Key outside retracts latchbolt
- Key inside retracts latchbolt
- Key outside extends/retracts deadbolt
- Key inside extends/retracts deadbolt
- Rigid outside lever
- Rigid inside lever
- Auxiliary latch deadlocks latchbolt

ANSI DOES NOT LIST THIS FUNCTION

MR131 SINGLE CYLINDER DEADBOLT

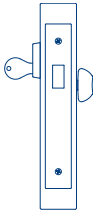


- Key outside extends/retracts deadbolt
- (Available only in sectional trim)*

ANSI F18

FUNCTIONS

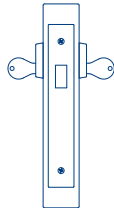
MR132 CYLINDER AND THUMBTURN DEADBOLT



- Key outside extends/retracts deadbolt
 - Thumbturn inside extends/retracts deadbolt
- (Available only in sectional trim)*

ANSI F17

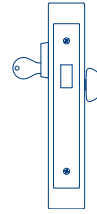
MR133 DOUBLE CYLINDER DEADBOLT



- Key outside extends/retracts deadbolt
 - Key inside extends/retracts deadbolt
- (Available only in sectional trim)*

ANSI F16

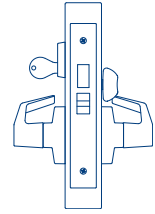
MR134 CLASSROOM DEADBOLT



- Key outside extends/retracts deadbolt
 - Inside cylinder turn retracts but does not extend deadbolt
- (Available only in sectional trim)*

ANSI DOES NOT LIST THIS FUNCTION

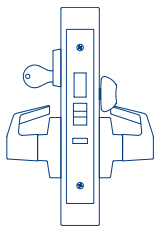
MR135 DORMITORY



- Latchbolt operated by lever from either side
- Key outside extends/retracts deadbolt
- Thumbturn inside extends/retracts deadbolt

ANSI F21

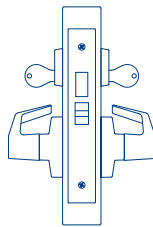
MR136 CORRIDOR



- Latchbolt operated by lever from either side
- Key outside extends/retracts deadbolt
- Thumbturn inside extends/retracts deadbolt
- Inside lever simultaneously retracts latchbolt and deadbolt
- Auxiliary latch deadlocks latchbolt

ANSI F13

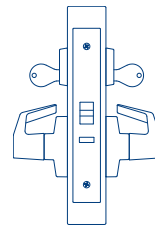
MR137 STOREROOM/ UTILITY ROOM



- Latchbolt operated by lever from either side
- Key outside extends/retracts deadbolt
- Key inside extends/retracts deadbolt

ANSI F14

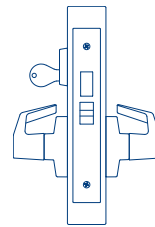
MR138 INSTITUTION



- Key outside retracts latchbolt
- Key inside retracts latchbolt
- Rigid outside lever
- Rigid inside lever
- Auxiliary latch deadlocks latchbolt

ANSI F30

MR139 CLOSET/STOREROOM

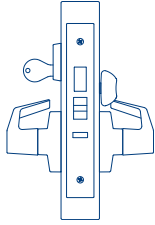


- Latchbolt operated by lever from either side
- Key outside extends/retracts deadbolt

ANSI DOES NOT LIST THIS FUNCTION

FUNCTIONS

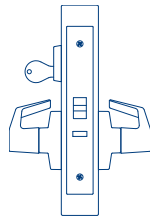
MR141 STOREROOM WITH DEADBOLT



- Latchbolt operated by lever from inside
- Key outside retracts latchbolt
- Key outside extends/retracts deadbolt
- Rigid outside lever
- Thumbturn inside extends/retracts deadbolt
- Inside lever simultaneously retracts latchbolt and deadbolt
- Auxiliary latch deadlocks latchbolt

ANSI DOES NOT LIST THIS FUNCTION

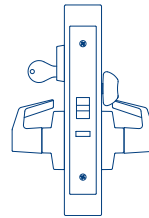
MR148 CLASSROOM



- Latchbolt operated by lever from either side
- Key outside locks/unlocks outside lever
- Auxiliary latch deadlocks latchbolt

ANSI F05

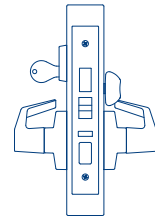
MR149 ASSISTED LIVING



- Latchbolt operated by lever from either side
- Key outside locks/unlocks outside lever
- Thumbturn inside locks/unlocks outside lever
- Closing door unlocks outside lever
- Rotating inside lever unlocks outside lever
- Auxiliary latch deadlocks latchbolt

ANSI DOES NOT LIST THIS FUNCTION

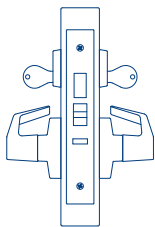
MR154 ENTRANCE



- Latchbolt operated by lever from either side
- Toggle locks/unlocks outside lever
- Key outside retracts latchbolt
- Key outside extends/retracts deadbolt
- Thumbturn inside extends/retracts deadbolt
- Inside lever simultaneously retracts latchbolt and deadbolt
- Auxiliary latch deadlocks latchbolt
- Projecting then retracting the deadbolt releases the toggle

ANSI DOES NOT LIST THIS FUNCTION

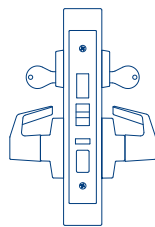
MR157 INTRUDER DEADBOLT WITH DEADLATCH



- Latchbolt operated by lever from either side
- Key outside extends/retracts deadbolt
- Key inside extends/retracts deadbolt
- Inside lever simultaneously retracts latchbolt and deadbolt
- Auxiliary latch deadlocks latchbolt

ANSI F34

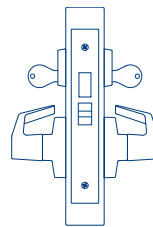
MR158 DORMITORY



- Latchbolt operated by lever from either side
- Toggle locks/unlocks outside lever
- Key outside extends/retracts deadbolt
- Key inside extends/retracts deadbolt
- Inside lever simultaneously retracts latchbolt and deadbolt
- Auxiliary latch deadlocks latchbolt

ANSI F11

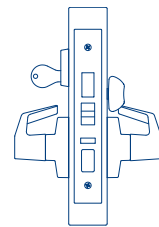
MR159 INTRUDER DEADBOLT



- Latchbolt operated by lever from either side
- Key outside extends/retracts deadbolt
- Key inside extends/retracts deadbolt
- Inside lever simultaneously retracts latchbolt and deadbolt

ANSI F33

162 DORMITORY OR EXIT

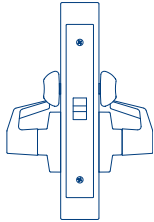


- Latchbolt operated by lever from either side
- Toggle locks/unlocks outside lever
- Key outside retracts latchbolt
- Key outside extends/retracts deadbolt
- Thumbturn inside extends/retracts deadbolt
- Inside lever simultaneously retracts latchbolt and deadbolt
- Auxiliary latch deadlocks latchbolt

ANSI F20

FUNCTIONS

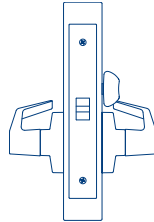
MR174 PRIVACY WITH THUMBTURN ON BOTH SIDES



- Latchbolt operated by lever from either side
- Thumbturn outside locks/unlocks outside lever
- Thumbturn inside locks/unlocks outside lever
- Closing door unlocks outside lever
- Rotating inside lever unlocks outside lever

ANSI DOES NOT LIST THIS FUNCTION

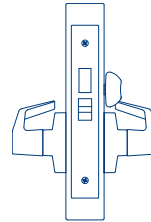
MR176 PRIVACY



- Latchbolt operated by lever from either side
- Emergency coin turn outside unlocks outside lever
- Thumbturn inside locks/unlocks outside lever
- Closing door unlocks outside lever
- Rotating inside lever unlocks outside lever

ANSI F22

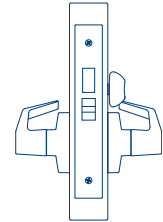
MR178 PRIVACY WITH DEADBOLT



- Latchbolt operated by lever from either side
- Emergency coin turn outside retracts deadbolt
- Thumbturn inside extends/retracts deadbolt

ANSI F02

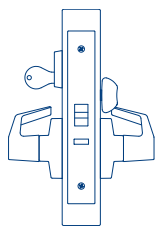
MR179 PRIVACY WITH DEADBOLT AND EGRESS



- Latchbolt operated by lever from either side
- Emergency coin turn outside retracts deadbolt
- Thumbturn inside extends/retracts deadbolt
- Inside lever simultaneously retracts latchbolt and deadbolt

ANSI F19

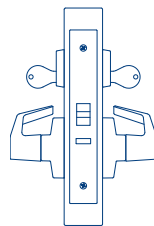
MR181 OFFICE



- Latchbolt operated by lever from either side
- Key outside locks/unlocks outside lever
- Thumbturn inside locks/unlocks outside lever
- Closing door unlocks outside lever
- Rotating inside lever unlocks outside lever
- Auxiliary latch deadlocks latchbolt

ANSI DOES NOT LIST THIS FUNCTION

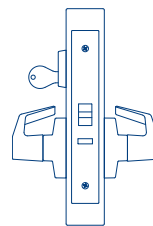
MR186 APARTMENT



- Latchbolt operated by lever from either side
- Key inside locks/unlocks outside lever
- Key outside retracts latchbolt
- Auxiliary latch deadlocks latchbolt

ANSI F09

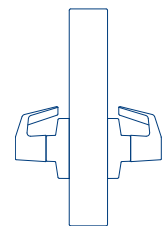
MR199 ELECTRIFIED STOREROOM



- Key outside retracts latchbolt
- Latchbolt operated by lever from inside
- Auxiliary latch deadlocks latchbolt
- Auxiliary fail safe – latchbolt operated by lever from outside unless electrically locked
- Auxiliary fail secure – latchbolt operated by lever from outside when electrically unlocked
- Accepts 12VDC@.6A, 12VAC@.6A, 24VDC@.3A and 24VAC@.3A
- Furnished with 6" wire leads
- Request to Exit Available

ANSI DOES NOT LIST THIS FUNCTION

MR205 DOUBLE DUMMY

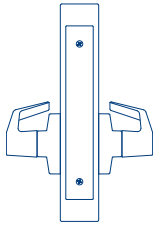


- Rigid outside lever
- Rigid inside lever

ANSI DOES NOT LIST THIS FUNCTION

FUNCTIONS

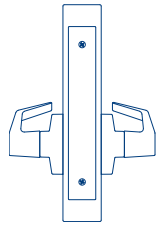
MR206 DOUBLE DUMMY WITH CHASSIS



- Rigid outside lever
- Rigid inside lever

ANSI DOES NOT LIST
THIS FUNCTION

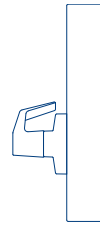
MR207 DOUBLE DUMMY WITH ACTIVE TRIM



- Moveable outside lever
- Moveable inside lever

ANSI DOES NOT LIST
THIS FUNCTION

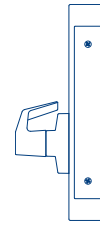
MR211 SINGLE DUMMY



- Rigid outside lever

ANSI DOES NOT LIST
THIS FUNCTION

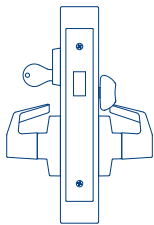
MR212 SINGLE DUMMY WITH CHASSIS



- Rigid outside lever

ANSI DOES NOT LIST
THIS FUNCTION

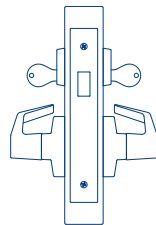
MR213 CYLINDER AND THUMBTURN DEADBOLT WITH DUMMY TRIM



- Key outside extends/
retracts deadbolt
- Thumbturn inside extends/
retracts deadbolt
- Rigid outside lever
- Rotating inside lever
retracts deadbolt

ANSI DOES NOT LIST
THIS FUNCTION

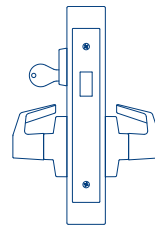
MR214 DOUBLE CYLINDER DEADBOLT WITH DUMMY TRIM



- Key outside
extends/retracts deadbolt
- Key inside extends/
retracts deadbolt
- Rigid outside lever
- Rotating inside lever
retracts deadbolt

ANSI DOES NOT LIST
THIS FUNCTION

MR215 SINGLE CYLINDER DEADBOLT WITH DUMMY TRIM



- Key outside extends/
retracts deadbolt
- Rigid outside lever
- Rotating inside lever
retracts deadbolt

ANSI DOES NOT LIST
THIS FUNCTION

Architectural Specification Sheet



MR Series Mortise Locks are manufactured by PDQ Industries, Inc., Leola, Pennsylvania and are assembled in the U.S.A., meeting the requirements of the Buy American Act. They carry a Limited Lifetime manufacturer's warranty. All lock bodies to conform to Federal Specification FF-H-106 Type 86 and to all dimensional specifications of ANSI A156.13-2005 Series 1000, Grade 1. Locks meet **Operational and Security Grade 1 with F and W Trims.** Operational Grade 1 and Security Grade 2 with J Trim. MR series is Windstorm Resistant Product Listed-ANSI A250.13-2005, ASTM E1886-02, ASTM E330-02, Outswing: 350 ft-lbs., N/R, Design Load Rating: 2453 lbf. (functions with deadbolts only). Thirty nine mortise lock functions are currently available.



While Handing of most lock functions is field reversible, strikes are handed. Latchbolt can be fully retracted with 35° lever rotation. Levers will have a Miami, Dallas, Philadelphia, Boston Chicago, Memphis and Ball knob design. Dallas W trim is furnished in solid stainless steel, Dallas and Chicago J trim are tube levers. Locksets for single doors up to 4'0" x 8'0" shall be listed by UL / ULC for ratings of "A" (3 hours) label and less. All locksets shall have a Limited Lifetime warranty from date of installation. All locksets shall meet or exceed all applicable requirements of the Americans with Disabilities Act of 1990.

SPECIFICATIONS – MR Series

DOOR THICKNESS:	1-3/4" to 2" standard (2-1/4" special order - not available in all functions or in "J" trim)
CASE:	13-gauge cold rolled steel mechanism / Dichromated for corrosion resistance
BACKSET:	2-3/4"
FRONT:	Beveled 1/8" on 2" / Stainless Steel or Brass (brass in F trim only)
STRIKE:	Handed Curved Lip Strike / Stainless Steel or (brass in F trim only)
LATCHBOLT:	3/4" Throw / Investment Cast Stainless Steel / Anti-friction
DEADBOLT:	1" Throw / Investment Cast Stainless Steel
HAND:	Most functions field reversible. Designate hand for strikes, consult factory for details
TRIM:	F trim - solid forged brass levers, escutcheons and turns. J trim - solid stainless steel escutcheons, PHL and Memphis levers. Stainless steel Dallas and Chicago levers. W trim - solid stainless steel lever and escutcheon. Stainless steel ball knob.
KEYS:	Two (2) per Cylinder
KEYWAYS:	SC1 standard / Also available in keyways of other manufacturers
INTERCHANGEABLE CORE:	6 or 7-pin / Compatible with Best, Falcon & Arrow / Large Format IC Core available. Check with factory.
CYLINDER:	6 or 7-pin Brass Mortise Cylinder
KEYING:	Options: MK, CMK or GMK / Zero Bitted (KO), Keyed Different (KD) or Keyed Alike (KA) Can be keyed into existing master key systems
FINISHES:	605 (US3), 606 (US4), 612 (US10), 613 (US10B), 625 (US26), 626 (US26D) - F trim / Antimicrobial Coating available on 626 (US26D) & 630 (US32D) for F, J, and W trims.
CERTIFICATION:	U.L., U.L.C. listed for "A" label (3 hour) single swing doors (4' x 8') / UL 10C / UBC 7-2 (1997) positive pressure, for single doors up to 4'0" x 8'0" / Certified to ANSI/BHMA 156.13-2005, Series 1000, / Operational Grade 1 and Security Grade 1 for F and W trim. Operational Grade 1, Security Grade for J trim. Windstorm Resistant product Listed. ANSI A250.13-2003, ASTM E1886-02, ASTM E330-02, Outswing: 350 ft-lbs., Inswing: N/R, Design Load Rating: 2453 lbf. (Functions with deadbolts only) / Levers meet all applicable accessibility requirements of the Americans with Disabilities Act (ADA)
WARRANTY:	Lifetime Limited Warranty
COUNTRY OF ORIGIN:	Assembled in the U.S.A. with U.S. and foreign material. Meets the requirements of the Buy American Act.

Note: Heavy Duty Spindle for High Abuse situations is available for F and W trim.

PDQ Manufacturing
2754 Creek Hill Road
Leola, PA 17540
717-656-4281
Fax-717-656-6892
Web:www.pdqlocks.com



PO Box 507 2754 Creek Hill Road Leola PA 17540
800 441 9692 • 717 656 4281 • 717 656 6892 Fax
www.pdqlocks.com

PDQ'S MR Series Brochures are now printed entirely on Forest Stewardship Council certified paper. FSC Certification ensures that the paper used in this catalog contains fiber from well-managed and responsibly harvested forests that meet strict environmental and socioeconomic standards. We're proud to be one of the first hardware manufacturers in the country to make this significant move to help our environment. The FSC logo on our brochure signals not only FSC Certification, but also PDQ's commitment to improving the environment.

